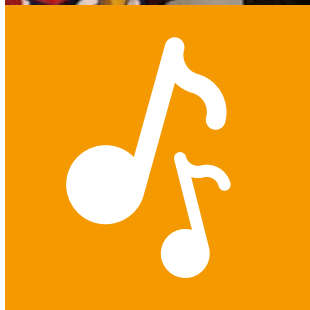
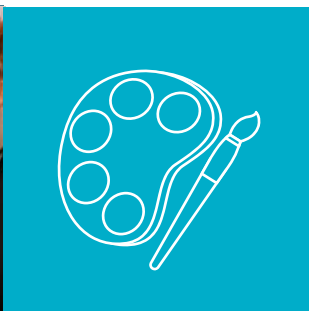


# SLOUGH CULTURAL EDUCATION PARTNERSHIP

# CULTURAL MENU FOR SCHOOLS & COLLEGES

AUTUMN EDITION



# WELCOME

Welcome to the Autumn edition of this Cultural Menu for Slough Schools and Colleges.

Aimed at teachers across education settings in Slough to improve the visibility of creative arts and creative careers in your local area and to help drive a more joined-up cultural education offer.

This collection of providers acts as a signposting resource for you and your pupils, bringing together cultural partners and creative organisations in a 'one-stop shop.'

As the Schools Relationship Manager for the Slough Cultural Education Partnership (CEP), I hope this menu helps provide a better understanding of the creative arts provision and enrichment on offer, so that the teachers and young people of Slough can benefit from:

- Awareness of and engagement in enrichment activities with local creative practitioners
- Building partnerships between Slough schools and arts/heritage/cultural partners, employers across creative industries
- Access to diverse cultural options to support the creative curriculum and build cultural capital and creative thinking

Would you and your school like FREE advice and support on how to further access arts and enrichment offers, creative careers?

Would you like the opportunity for CPD, skill sharing and networking? Why not join ALF?

The Art Leads Forum – a FREE half-termly twilight created for Primary and Secondary Art Subject Leads/Heads of Art For further information please contact Jo.



## Jo Lonsdale

Schools Relationship Manager,  
Slough Cultural Education Partnership (CEP)  
[jo@resource-productions.co.uk](mailto:jo@resource-productions.co.uk)

# SLOUGH CULTURAL EDUCATION PARTNERSHIP (CEP)

## Background and Purpose

Established in 2016, Slough's Cultural Education Partnership (CEP) is a consortium of cultural, health, children's services, and educational partners.

The purpose of the group is to create an evidence-based strategy, supported by funding and investment, which will help shape the future of arts, culture and heritage for the children and young people of Slough and ensure accessible, diverse and high-quality provision to support their health, social and economic wellbeing.

## Vision

For all children and young people in Slough to take part in and enjoy culture, heritage and the arts. Slough CEP wants this participation to be with local, regional, national and international partners and for it to be sustainable. Above all, our vision is for culture, heritage, and the arts to help Slough children and young people achieve, be happy, creative and productive, and prepared for a positive future.

## About LCEPs

Local Cultural Education Partnerships were launched by Arts Council England (ACE) to tackle the cultural education needs specific to a locality. The aim of LCEPs is to increase creative and cultural opportunities for children and young people and develop better relationships between cultural organisations, creative practitioners, schools, HE and FE providers.

LCEPs support children and young people to fulfil their creative potential and access high-quality cultural experiences where they live, where they go to school, and where they spend their free time.

Slough CEP is supported by Artswork, the South-East Bridge organisation for ACE [artswork.org.uk](http://artswork.org.uk). You can find out more about the Arts Council England LCEP initiative here - [www.artscouncil.org.uk/children-and-young-people/working-partnership](http://www.artscouncil.org.uk/children-and-young-people/working-partnership).

# CREATIVE ARTS

Provider	Description	Website	Contact
Art Classes Group	Provides artist run innovative workshops in schools to meet National Curriculum programmes of study requirements. Arts Award Champion Centre.	<a href="http://www.artclassesgroup.com">www.artclassesgroup.com</a>	<a href="mailto:info@artclassesgroup.com">info@artclassesgroup.com</a>
Antz Kidz Activity Centre at St. George's Church	Specialising in arts and crafts and homework support, working collaboratively with the local community. Minibus transport available.	<a href="https://www.facebook.com/AntzKidzActivityCentre">www.facebook.com/AntzKidzActivityCentre</a>	<a href="mailto:antzkidz@yahoo.com">antzkidz@yahoo.com</a>
The Arts Excite CIC	Helps disadvantaged young people fulfil their potential by giving them the confidence, training and experience needed to gain a career in the creative industry.	<a href="http://www.thearts-excite.org/school-youth-workshops">www.thearts-excite.org/school-youth-workshops</a>	<a href="mailto:info@thearts-excite.org">info@thearts-excite.org</a>
Art Beyond Belief	Art Beyond Belief works primarily in the areas of mental health and well-being, education and diversity.	<a href="http://www.art-beyond-belief.com">www.art-beyond-belief.com</a>	<a href="mailto:info@art-beyond-belief.com">info@art-beyond-belief.com</a>
Artswork	Southeast Bridge of the Arts Council offering a range of events and resources to support schools to develop arts, culture and creativity across the curriculum in particular Artsmark and Arts Award.	<a href="http://www.artswork.org.uk">www.artswork.org.uk</a>	<a href="mailto:eleanormarkland@artswork.org.uk">eleanormarkland@artswork.org.uk</a>
Empoword	Empoword is a spoken word platform, incorporating poets, rappers and creative writers. Many of the performers are adept workshop leaders, providing performances and writing sessions for schools and community groups.	<a href="http://www.empowordslough.org">www.empowordslough.org</a>	<a href="mailto:empoword@aiksaath.com">empoword@aiksaath.com</a>
The Slough Hub	Offer After School Clubs and Holiday Clubs for primary school-aged children to help them express themselves and learn new skills. Organise art contests and exhibitions to give local Slough artists a platform to showcase their works, working with many talented artists.	<a href="http://www.thesloughhub.org">www.thesloughhub.org</a>	<a href="mailto:contact@thesloughhub.org">contact@thesloughhub.org</a>







## PERFORMING ARTS & MUSIC

Provider	Description	Website	Contact
Rifco Theatre	Rifco develops and produces new plays and musicals which celebrates and reflects contemporary British Asian experiences.	<a href="http://www.rifcotheatre.com/the-company">www.rifcotheatre.com/the-company</a>	<a href="mailto:info@rifcotheatre.com">info@rifcotheatre.com</a>
Slough Music Service	Slough Music Service offers a range of services for schools to develop vocal and instrumental learning, as well as supporting teachers and music leaders.	<a href="http://www.sloughmusicservice.co.uk">www.sloughmusicservice.co.uk</a>	<a href="mailto:rebecca.richardson@slough.gov.uk">rebecca.richardson@slough.gov.uk</a>
Creative Academy	The Creative Academy creates talented performers/teachers, dance practitioners and technicians who can support schools.	<a href="http://www.creativeacademy.ac.uk">www.creativeacademy.ac.uk</a>	<a href="mailto:info@creativeacademy.org">info@creativeacademy.org</a>
SWIPE (Slough West Indian People's Enterprise)	Works with young people between the ages of 8 – 19 years of age and in some cases up to 25, providing many music activities including instrumental tuition and vocal coaching. Jubilee Riverside Centre includes a rehearsal space and also runs rowing and kayaking activities.	<a href="http://www.facebook.com/theriversidecentreslough">www.facebook.com/theriversidecentreslough</a>	<a href="mailto:team@sloughriverside.org.uk">team@sloughriverside.org.uk</a>
Beat Routes	Beat Routes, give young people a stimulating and positive environment to help them see that they can choose a positive future. Through music and creative workshops, young people are inspired to learn and work on creative projects.	<a href="http://www.beatroutes.co.uk">www.beatroutes.co.uk</a>	<a href="mailto:info@beatroutes.co.uk">info@beatroutes.co.uk</a>
Amina Khayyam Dance Company	From South Asian dance Kathak technique to tableaux creativity, single and multiple instructor workshops and performances packed with a fun and engaging, collaborative approach to the curriculum are offered to schools.	<a href="http://www.aminakhayyamdance.co.uk/schools">www.aminakhayyamdance.co.uk/schools</a>	<a href="mailto:info@aminakhayyamdance.co.uk">info@aminakhayyamdance.co.uk</a>

## PSHE AND CITIZENSHIP

Provider	Description	Website	Contact
HOME Slough	Supports all types of creative activities, exhibitions, workshops and performances across theatre, film, dance, music, poetry and visual art.	<a href="http://www.homeslough.org.uk">www.homeslough.org.uk</a>	<a href="mailto:info@homeslough.org.uk">info@homeslough.org.uk</a>
Youth Engagement Slough (YES)	YES deliver many different kinds of free provision for young people aged between 11 -19, and up to 25 with Learning Disabilities or Difficulties.	<a href="http://www.yesslough.org.uk/about-us">www.yesslough.org.uk/about-us</a>	<a href="mailto:info@yesslough.org.uk">info@yesslough.org.uk</a>
Together as One (Aik Saath)	Workshops and programmes of training covering a broad range of themes, including conflict resolution, community cohesion, racism and extremism.	<a href="http://www.aiksaath.com/training-workshops">www.aiksaath.com/training-workshops</a>	<a href="mailto:info@aiksaath.com">info@aiksaath.com</a>
Apna Virsa Project	Explores and shares South Asian Culture and Heritage through a variety of projects including workshops, courses, events and activities using creative methods, such as the arts for self-expression and self- empowerment.	<a href="http://www.apnavirsa.org.uk">www.apnavirsa.org.uk</a>	<a href="mailto:apnavirsa@gmail.com">apnavirsa@gmail.com</a>

## LOCAL HERITAGE

Provider	Description	Website	Contact
Slough Museum/ The Curve	Slough Museum at The Curve has local history Museum pods/collections e.g. linked to WW2 and the Victorians including local inventors and industrialisation – William Herschel and James Elliman.	<a href="http://www.sloughmuseum.co.uk/the-curve">www.sloughmuseum.co.uk/the-curve</a>	<a href="http://www.sloughmuseum.co.uk/contact-us">www.sloughmuseum.co.uk/contact-us</a>

## LITERACY AND STORYTELLING

Provider	Description	Website	Contact
Slough Library Service	Offers enrichment opportunities for school pupils and family reading activities.	<a href="http://www.slough.gov.uk/libraries">www.slough.gov.uk/libraries</a>	<a href="mailto:Alison.Beer@slough.gov.uk">Alison.Beer@slough.gov.uk</a>
Becci-Louise Fearnley	Poet who runs creative writing projects with schools and has been a writer in residence at Slough & Eton Business Enterprise College.	<a href="http://www.rebeccaearnleywrites.co.uk/poetry">www.rebeccaearnleywrites.co.uk/poetry</a>	<a href="mailto:contactme@rebeccaearnleywrites.co.uk">contactme@rebeccaearnleywrites.co.uk</a>
Desree	Writer, Spoken Word, Poet and Educator.	<a href="http://www.iamdesree.co.uk/about">www.iamdesree.co.uk/about</a>	<a href="http://www.iamdesree.co.uk/contact">www.iamdesree.co.uk/contact</a>
VIBE/ Motivation Dance Academy	Works with schools focusing on issues concerning young people and the division between race, religions and cultural backgrounds using song, dance and drama.	<a href="http://www.motivation4you.co.uk/aboutus">www.motivation4you.co.uk/aboutus</a>	<a href="http://www.motivation4you.co.uk/contact">www.motivation4you.co.uk/contact</a>

## MEDIA/DESIGN & TECHNOLOGY/ STEAM

Provider	Description	Website	Contact
Resource Productions CIC	A Slough based production company offering film-making, training and career opportunities for young people in the creative industries; a vast range of creative and technical workshops and training courses in digital media/production.	<a href="http://www.resource-productions.co.uk">www.resource-productions.co.uk</a>	<a href="mailto:projects@resource-productions.co.uk">projects@resource-productions.co.uk</a>
Animation Expressions	Animation workshops linked to Art & Design, Music, Drama, Literacy and ICT across the Key Stages.	<a href="http://www.animationexpressions.com">www.animationexpressions.com</a>	<a href="http://www.animationexpressions.com/contact-us">www.animationexpressions.com/contact-us</a>



# OUTDOOR LEARNING AND SPORT

Provider	Description	Website	Contact
Black Country Park, Wexham	Has Rangers and a Forest School that may provide advice and/or support for Slough schools.	<a href="http://www.countryparks.buckscc.gov.uk/black-park">www.countryparks.buckscc.gov.uk/black-park</a>	<a href="mailto:countryparks@buckinghamshire.gov.uk">countryparks@buckinghamshire.gov.uk</a>
Slough Borough Council	In addition to asking parents/grandparents to help with a school garden, Slough Borough Council could provide support through their park volunteers and allotment spaces.	<a href="http://www.slough.gov.uk/parks-green-spaces">www.slough.gov.uk/parks-green-spaces</a>	<a href="mailto:parks@slough.gov.uk">parks@slough.gov.uk</a>
Berkshire College of Agriculture, Education Centre and Zoo Encounters	Runs animal visits and offers meerkat, reptile and zookeeping experiences. Also runs horticultural courses which may do projects with schools.	<a href="http://www.zoo.bca.ac.uk/encounters">www.zoo.bca.ac.uk/encounters</a>	<a href="mailto:zoo@bca.ac.uk">zoo@bca.ac.uk</a>
Berks, Bucks @ Oxon Wildlife Trust	BBOWT uses a science-led approach to protect and restore natural habitats, which are home to some of our most precious wildlife. Includes Nature tots, wildlife walks and online talks with experts.	<a href="http://www.bbowl.org.uk/explore/discover-and-learn">www.bbowl.org.uk/explore/discover-and-learn</a>	<a href="mailto:sceec@bbowl.org.uk">sceec@bbowl.org.uk</a>
Slough School Sport Network	The Slough School Sport Network (SSSN) is made up of a partnership of local infant, primary, junior, secondary and special schools. Provides all young people with the opportunity to participate in high quality sport and physical activity opportunities.	<a href="http://www.wexhamschool.co.uk">www.wexhamschool.co.uk</a>	<a href="mailto:lf@wexham.slough.sch.uk">lf@wexham.slough.sch.uk</a> or <a href="mailto:ygutteridge@wexham.slough.sch.uk">ygutteridge@wexham.slough.sch.uk</a>
Jubilee Riverside Centre	The Jubilee River Riverside Centre offers regular Rowing and Kayaking activities for all. They work with individuals, schools and community groups.	<a href="http://www.sloughriverside.org.uk">www.sloughriverside.org.uk</a>	<a href="mailto:team@sloughriverside.org.uk">team@sloughriverside.org.uk</a>



# WHAT IS YES?

Youth Engagement Slough (YES) is a consortium of Slough based providers of services to young people led by Together As One (Aik Saath), Resource Productions and SWIPE.

The lead groups are led by young people, in fact, young people came up with the name YES.

YES has over 25 other local organisations signed up as Associates and with whom we deliver services.

YES deliver many different kinds of provision, FOR FREE, for young people aged between 11-19, and up to 25 with Learning Disabilities or Difficulties.

[www.yesslough.org.uk](http://www.yesslough.org.uk)

YES Leads:



# CULTURAL EDUCATION PARTNERS

